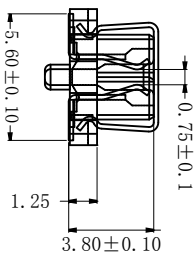
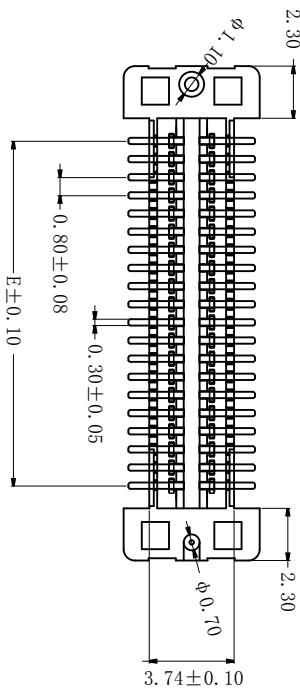
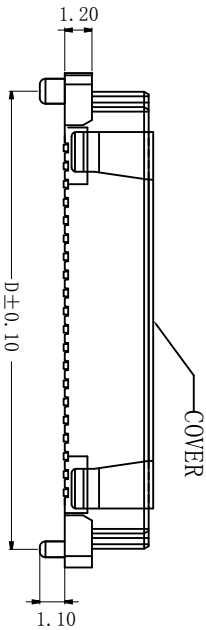


ASSEMBLY

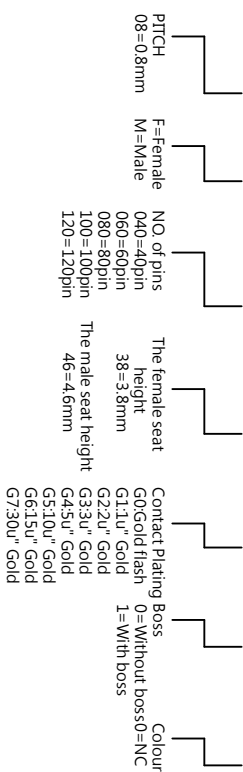


Electrical:

- Vlotag Rating: 50V AC(rms) /DC
- Current Rating: 0.5A AC(rms) /DC
- Contact Resistance: 50mΩ Max
- Insulation Resistance: 500MΩ min
- Dielectric Withstanding Voltage: 200V AC r.m.s
- Operating Temperature: -40°C~+105°C
- Material: s
- Housing: High Temperature Plastic
- UL94V-0
- Terminal: Copper Alloy
- Material: LCP NC
- Contact: phosphor Bronze, Gold Plating

Ordering Information

SGD-08-F - XXXP-H38 -G2 1 0



Contacts	Dimension (mm)				
	DIM.A	DIM.B	DIM.C	DIM.D	DIM.E
40	21.90	20.20	18.80	20.20	15.20
60	29.90	28.20	26.80	28.20	23.20
80	37.90	36.20	34.80	36.20	31.20
100	45.90	44.20	42.80	44.20	39.20
120	53.90	52.20	50.80	52.20	47.20

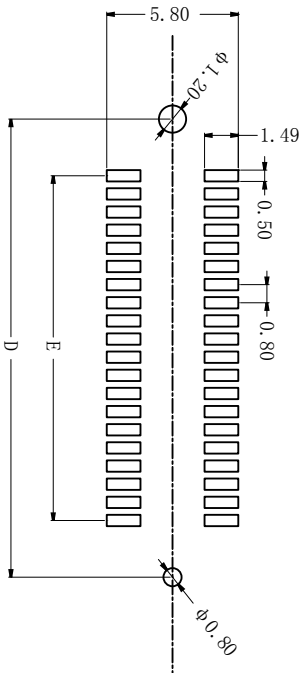
单位	M	M
日期	14.08.30	

比例	1:1
角度公差	±1°
	±0.05
	±0.10
	±0.20

山谷道 深圳市山谷道电子有限公司

定制	料号	SGD-08-F-***P-H38-G210
校对	版本	A
审核	倒角	
	包装规格	卷带1000PCS/R
	品名	单槽0.8mm板对板 母座 H3.8 立贴
	料号	SGD-08-F-***P-H38-G210
	品名	单槽0.8mm板对板 母座 H3.8 立贴
	包装规格	卷带1000PCS/R
	审核	xx001

PCB LAYOUT



PCB LAYOUT