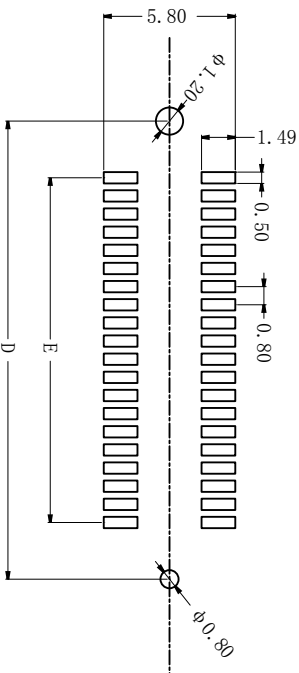
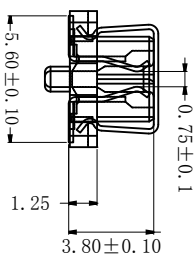
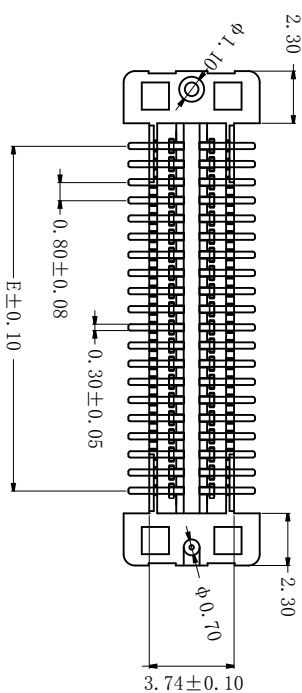
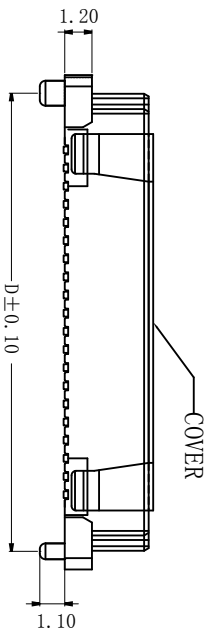


ASSEMBLY

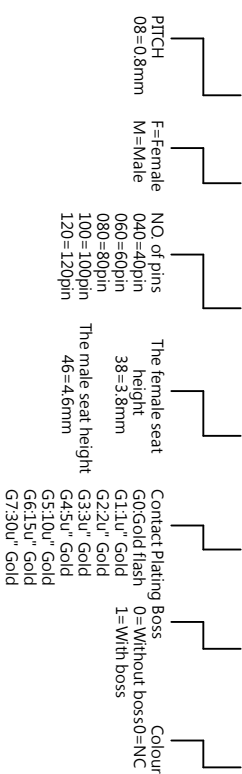


PCB LAYOUT

Electrical:
 Vlotag Rating: 50V AC(rms) /DC
 Current Rating: 0.5A AC(rms) /DC
 Contact Resistance: 50mΩ Max
 Insulation Resistance: 500MΩ min
 Dielectric Withstanding Voltage: 200V AC r.m.s
 Operating Temperature: -40°C ~ +105°C
 Materials
 Housing: High Temperature Plastic
 UL94V-0
 Terminal: Copper Alloy
 Material: LCP NC
 Contact: phosphor Bronze, Gold Plating

Ordering Information

SGD-08-F - XXXP-H38 -G1 1 0



Contacts	Dimension (mm)				
	DIM.A	DIM.B	DIM.C	DIM.D	DIM.E
40	21.90	20.20	18.80	20.20	15.20
60	29.90	28.20	26.80	28.20	23.20
80	37.90	36.20	34.80	36.20	31.20
100	45.90	44.20	42.80	44.20	39.20
120	53.90	52.20	50.80	52.20	47.20

单位	M	M
日期	14.08.30	

比例	1:1
角度公差	±1°

尺寸公差
 ±0.05
 ±0.10
 ±0.20

山谷道 深圳市山谷道电子有限公司

定制	料号	SGD-08-F-***P-H38-G110
校对	版本	A
审核	倒角	
	包装规格	卷带1000PCS/R
	品名	单槽0.8mm板对板 母座 H3.8 立贴
	料号	SGD-08-F-***P-H38-G110
	品名	单槽0.8mm板对板 母座 H3.8 立贴
	包装规格	卷带1000PCS/R
	审核	xx001