

Female Header

Pitch:2.00mm

Single Row/ Dual Row

Straight DIP Type

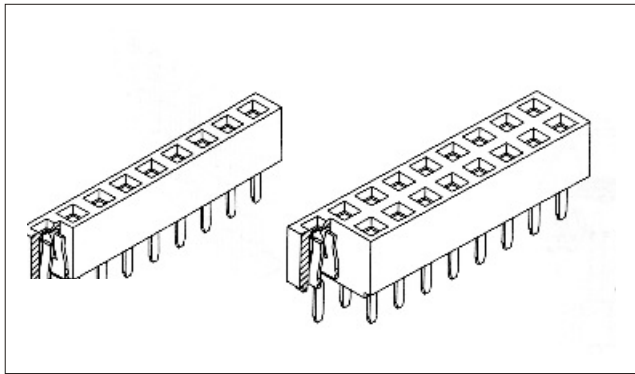
Series

222 ~ 224

226 ~ 228

sgdconn

[Http://www.sgdconn.com](http://www.sgdconn.com)



SPECIFICATIONS:

Current Rating: 2.0 AMP

Contact Resistance: 30m• Max

Insulation Resistance: 1000M• Min

Withstand Voltage: 500VAC/minute

Operation Temperature: -40°C to +105°C

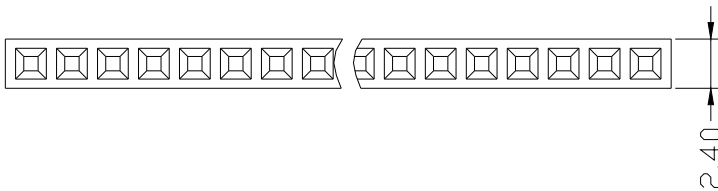
MATERIALS:

Contact Material: Copper Alloy

Contact Plating: Gold or Tin over 50μ " Ni

Insulator: Glass Filled Polyester(UL94V-0)

Standard: PA6T

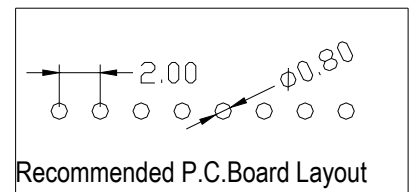
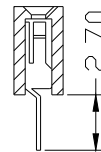
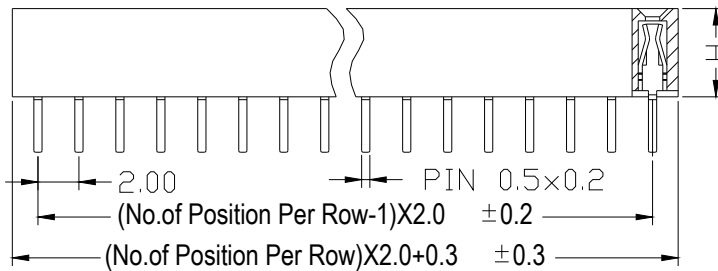


H = 2.20mm

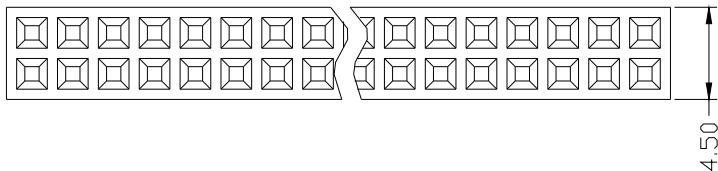
H = 4.00mm

H = 4.30mm

H = 4.60mm



Recommended P.C.Board Layout

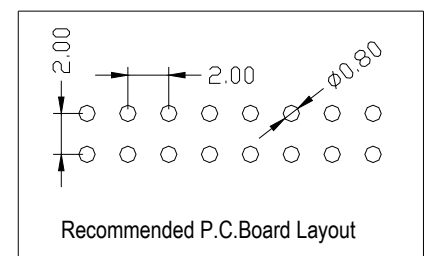
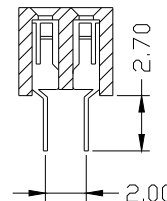
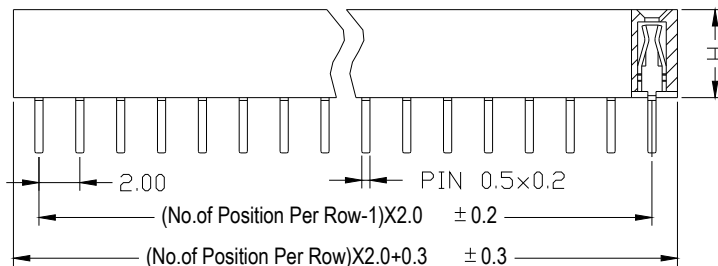


H = 2.20mm

H = 4.00mm

H = 4.30mm

H = 4.60mm



Recommended P.C.Board Layout

Ordering Code

① ② ③ ④ ⑤ ⑥ ⑦ ⑧ ⑨ ⑩
2 2 X X XX S 1 4 1 0

① Series No.:
2= Female Header

② Pitch: 2= 2.00mm

③ Insulator Height:
2 = 2.2mm
8 = 4.0mm
4 = 4.3mm
6 = 4.6mm

④ Dip Spacing:
1=Single row
2=Double row

⑤ Number of Contacts:
Single row = 01 to 40
Double row = 02 to 80

⑥ Tail & Mounting Style:
S=Straight DIP type

⑦ Contact Plated
0=Tin
1=Gold Flash
2=Gold 3u"
3=Gold 5u"
4=Gold 10u"
5=Gold 15u"
6= Gold 30u"

⑧ Material Type
0=PPS
1=PBT
2=LCP
3=Nylon-66
4=Nylon-6T
5=PA46

⑨ Color: 1=Black

⑩ Customer Request

Due to technical progress, all the information provided is subject to change without prior notice.