


PRELIMINARY
DESIGN IS SUBJECT
TO CHANGE WITHOUT
PRIOR NOTICE

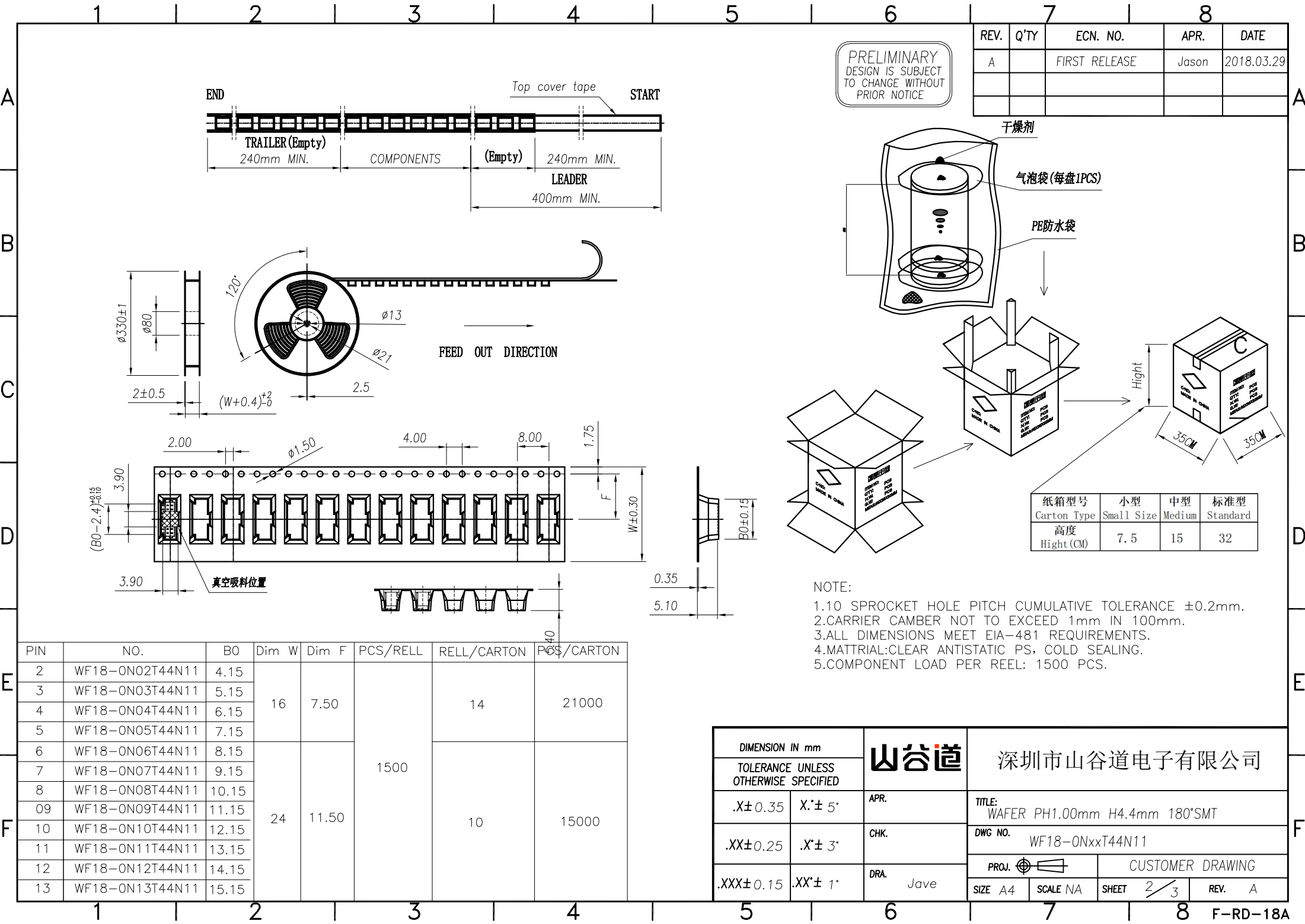
REV.	Q'TY	ECN. NO.	APR.	DATE
A		FIRST RELEASE	Jason	2018.03.29

- NOTES:
- Working temp: $-25^{\circ}\text{C} \sim 85^{\circ}\text{C}$.
 - Voltage rating: 50V AC/DC(rms)
 - Contact resistance: 40m Ω max.
 - Insulation resistance: 100M Ω min.
 - Current rating: 1A AV/DC
 - Withstanding Voltage: 500V AC/minute
 - Pin Retention Force: 3N min.
 - Housing material: LCP UL94-V0, Natural
 - Terminal mater: Brass, plating Ni 40u" min, plating Tin 100u"min.
 - Solder tab material: Brass, plating Ni 40u" min, plating Tin 100u"min.

RECOMMENDED PCB LAYOUT TOP VIEW (TOLERANCE: ± 0.05)

SMT SOLDER AREA

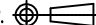
DIMENSION IN mm		山谷道	深圳市山谷道电子有限公司			
TOLERANCE UNLESS OTHERWISE SPECIFIED						
.X±0.35	X.±5°	APR. Alex	TITLE: WAFER PH1.00mm H4.4mm 180°SMT			
.XX±0.25	.X.±3°	CHK. Jack	DWG NO. WF18-0NxxT44N11			
.XXX±0.15	.XX.±1°	DRA. Jave	PROJ. 		CUSTOMER DRAWING	
			SIZE A4	SCALE 5:1	SHEET 1/3	REV. A



PRELIMINARY
DESIGN IS SUBJECT
TO CHANGE WITHOUT
PRIOR NOTICE

REV.	Q'TY	ECN. NO.	APR.	DATE
A		FIRST RELEASE	Jason	2018.03.29

PIN	NO.	B0	Dim W	Dim F	PCS/REEL	REEL/CARTON	PCS/CARTON
2	WF18-ON02T44N11	4.15	16	7.50	1500	14	21000
3	WF18-ON03T44N11	5.15					
4	WF18-ON04T44N11	6.15					
5	WF18-ON05T44N11	7.15					
6	WF18-ON06T44N11	8.15	24	11.50	1500	10	15000
7	WF18-ON07T44N11	9.15					
8	WF18-ON08T44N11	10.15					
09	WF18-ON09T44N11	11.15					
10	WF18-ON10T44N11	12.15					
11	WF18-ON11T44N11	13.15					
12	WF18-ON12T44N11	14.15					
13	WF18-ON13T44N11	15.15					

DIMENSION IN mm		山谷道	深圳市山谷道电子有限公司		
TOLERANCE UNLESS OTHERWISE SPECIFIED					
.X±0.35	X'± 5°	APR.	TITLE: WAFER PH1.00mm H4.4mm 180°SMT		
.XX±0.25	.X'± 3°	CHK.	DWG NO. WF18-ONxxT44N11		
.XXX±0.15	.XX'± 1°	DRA. Jave	PROJ. 		CUSTOMER DRAWING
			SIZE A4	SCALE NA	SHEET 2/3

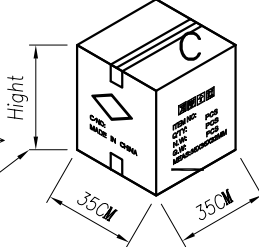
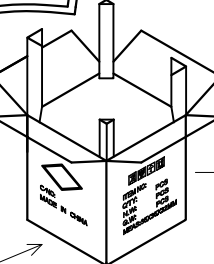
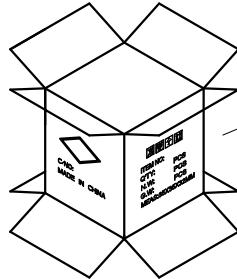
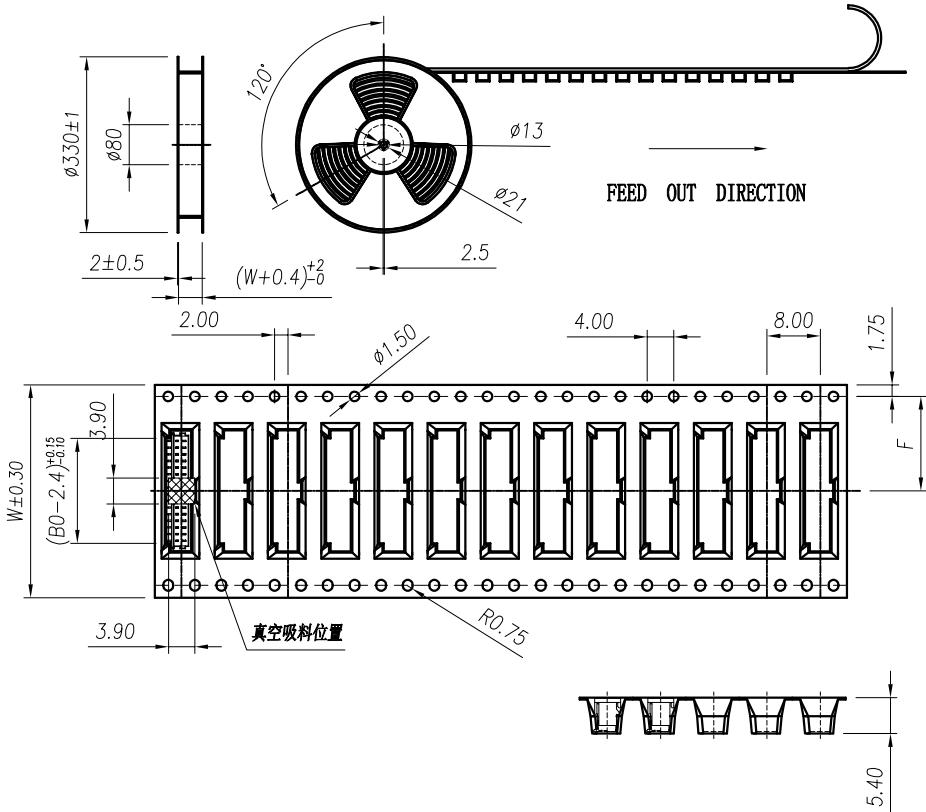
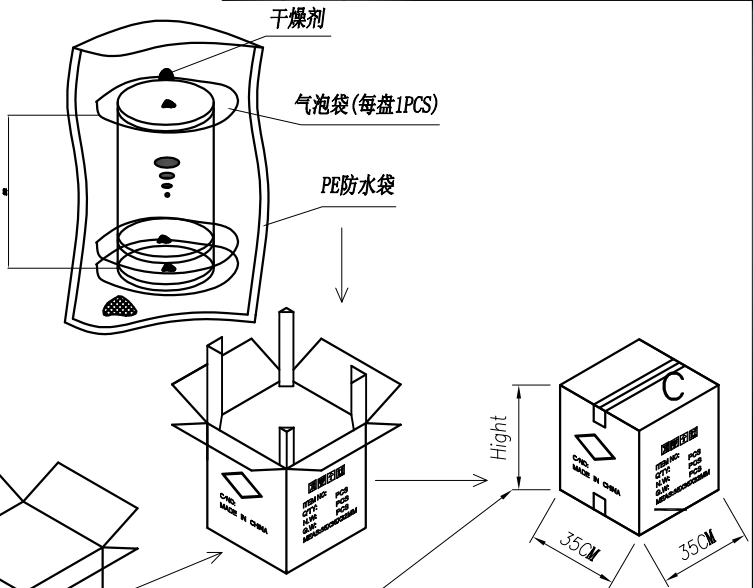
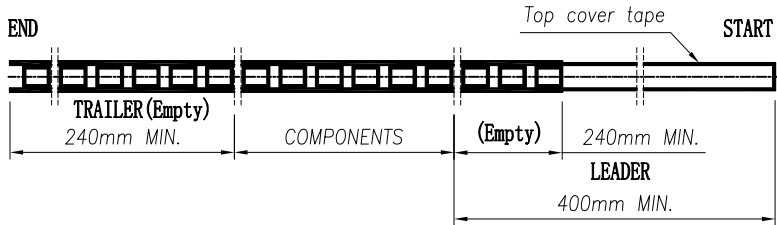
A
B
C
D
E
F

12345678

PRELIMINARY
DESIGN IS SUBJECT
TO CHANGE WITHOUT
PRIOR NOTICE

REV.	Q'TY	ECN. NO.	APR.	DATE
A		FIRST RELEASE	Jason	2018.03.29

A
B
C
D
E
F



纸箱型号 Carton Type	小型 Small Size	中型 Medium	标准型 Standard
高度 Height (CM)	7.5	15	32

- NOTE:
- 1.10 SPROCKET HOLE PITCH CUMULATIVE TOLERANCE $\pm 0.2\text{mm}$.
 - 2.CARRIER CAMBER NOT TO EXCEED 1mm IN 100mm.
 - 3.ALL DIMENSIONS MEET EIA-481 REQUIREMENTS.
 - 4.MATERIAL: CLEAR ANTISTATIC PS, COLD SEALING.
 - 5.COMPONENT LOAD PER REEL: 1500 PCS.

PIN	NO.	B0	Dim W	Dim F	PCS/REEL	REEL/CARTON	PCS/CARTON
14	WF18-ON14T44N11	16.15	32	14.2	1500	8	12000
15	WF18-ON15T44N11	17.15					
16	WF18-ON16T44N11	18.15					

DIMENSION IN mm TOLERANCE UNLESS OTHERWISE SPECIFIED		山谷道	深圳市山谷道电子有限公司	
.X \pm 0.35	X.* \pm 5°		APR.	TITLE: WAFER PH1.00mm H4.4mm 180°SMT
.XX \pm 0.25	.X.* \pm 3°	CHK.		DWG NO. WF18-ONxxT44N11
.XXX \pm 0.15	.XX.* \pm 1°	DRA. Jave		PROJ. CUSTOMER DRAWING
			SIZE A4	SCALE NA
			SHEET 3/3	REV. A

12345678