

PRELIMINARY
DESIGN IS SUBJECT
TO CHANGE WITHOUT
PRIOR NOTICE

- NOTES:
- Working temp: -25°C~85°C.
 - Voltage rating: 50V AC/DC(rms)
 - Contact resistance: 40mΩ max.
 - Insulation resistance: 100MΩ min.
 - Current rating: 1A AV/DC
 - Withstanding Voltage: 500V AC/minute
 - Pin Retention Force: 5N min.
 - Housing material: LCP UL94-V0, Natural
 - Terminal materl: Brass, plating Ni 40u" min, plating Tin 100u"min.
 - Solder tab material: Brass, plating Ni 40u" min, plating Tin 100u"min.

DIMENSION IN mm		山谷道	深圳市山谷道电子有限公司	
TOLERANCE UNLESS OTHERWISE SPECIFIED				
.X±0.35	X:±5°	APR. Alex	TITLE: WAFER PH1.25mm H4.9mm 180°SMT	
.XX±0.25	.X:±3°	CHK. Jack	DWG NO. WF15-ONxxT49N11	
.XXX±0.15	.XX:±1°	DRA. Jave	PROJ. CUSTOMER DRAWING	
SIZE A4	SCALE 5:1	SHEET 1/3	REV. A	

A

B

C

D

E

F

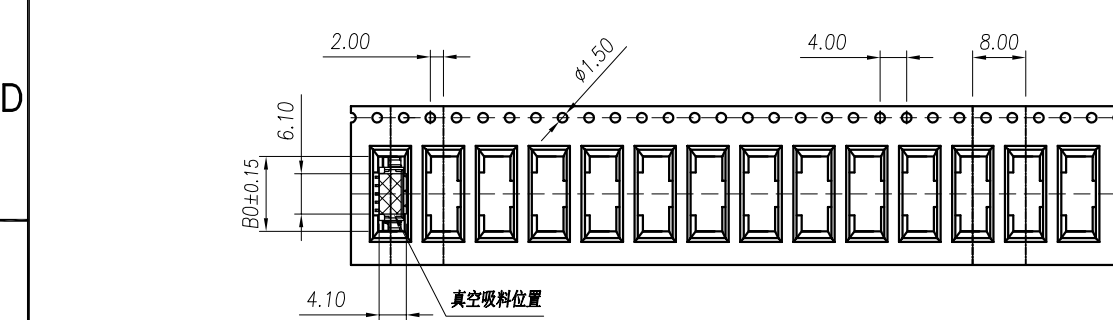
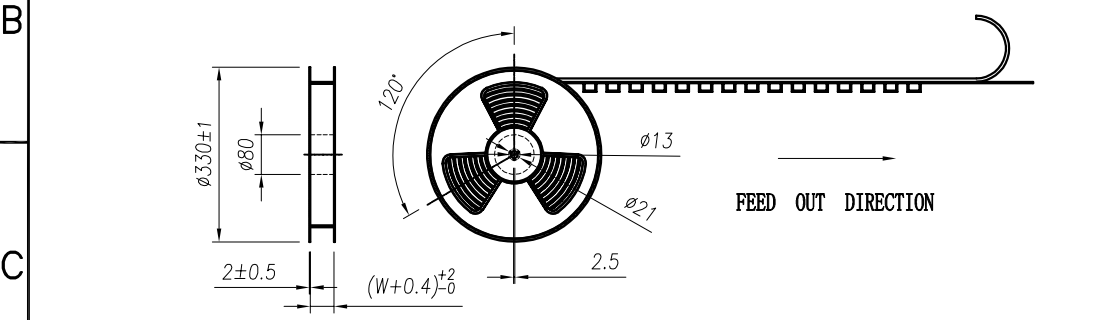
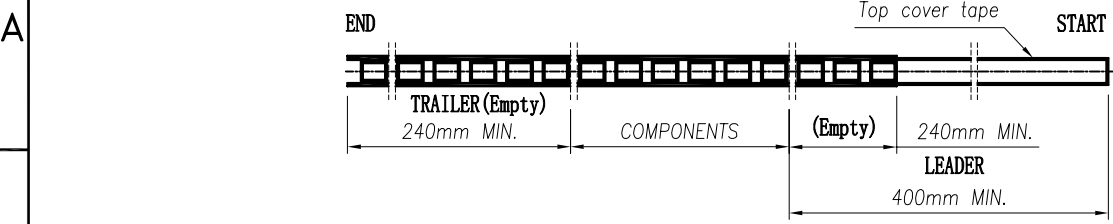
A

B

D

E

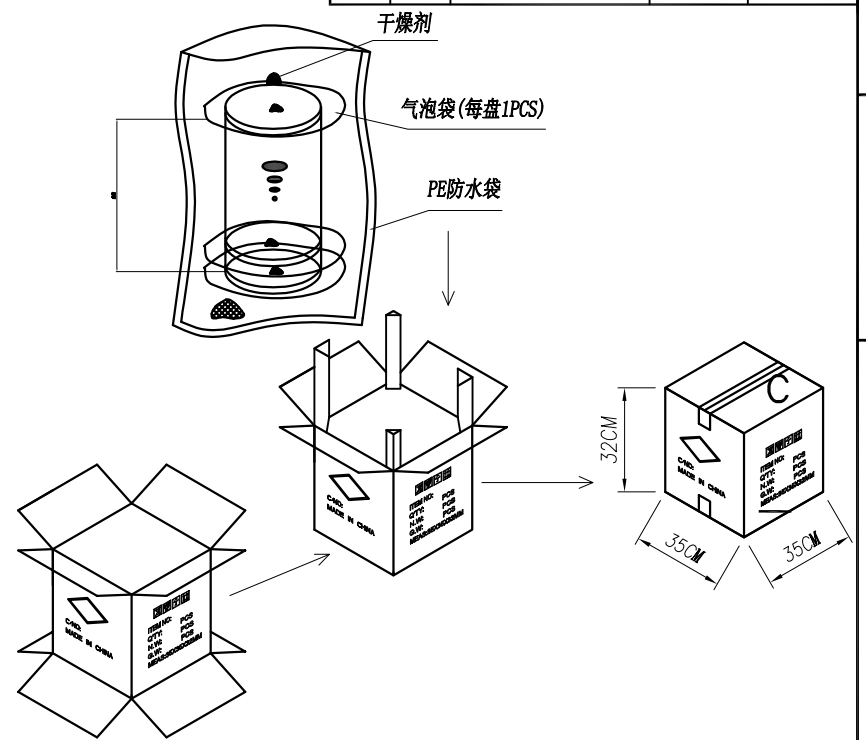
F



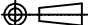
PIN	NO.	BO	Dim W	Dim F	PCS/RELL	RELL/CARTON	PCS/CARTON
2	WF15-ON02T49N11	7.80	16	7.50	1500	14	21000
3	WF15-ON03T49N11	9.05					
4	WF15-ON04T49N11	10.30					
5	WF15-ON05T49N11	11.55	24	11.50	1500	10	15000
6	WF15-ON06T49N11	12.80					
7	WF15-ON07T49N11	14.05					
8	WF15-ON08T49N11	15.30					

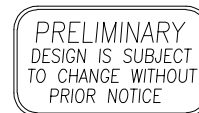
PRELIMINARY
DESIGN IS SUBJECT
TO CHANGE WITHOUT
PRIOR NOTICE

REV.	Q'TY	ECN. NO.	APR.	DATE
A		FIRST RELEASE	Jason	2018.03.29

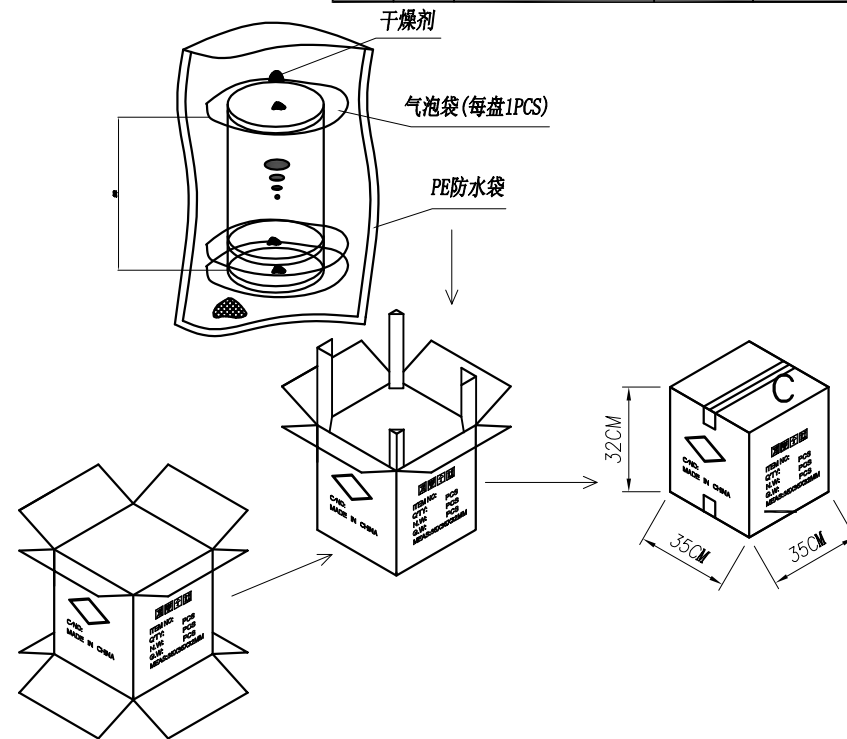


NOTE:
1.10 SPROCKET HOLE PITCH CUMULATIVE TOLERANCE ±0.2mm.
2.CARRIER CAMBER NOT TO EXCEED 1mm IN 100mm.
3.ALL DIMENSIONS MEET EIA-481 REQUIREMENTS.
4.MATERIAL: CLEAR ANTISTATIC PS, COLD SEALING.
5.COMPONENT LOAD PER REEL: 1500 PCS.

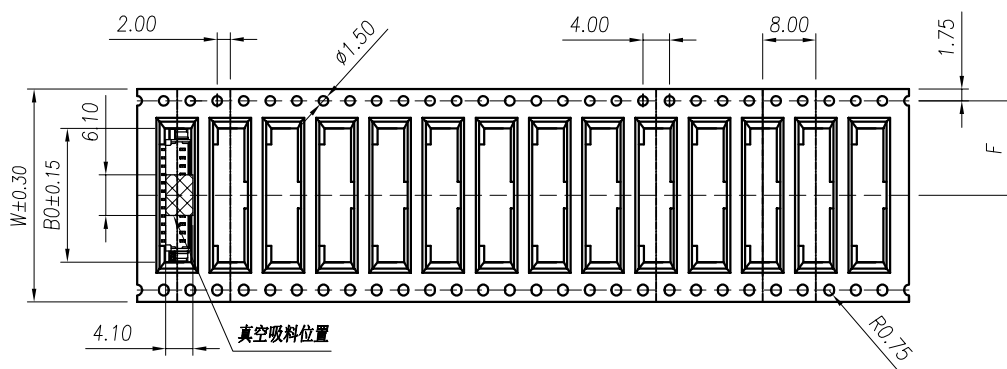
DIMENSION IN mm		山谷道	深圳市山谷道电子有限公司			
TOLERANCE UNLESS OTHERWISE SPECIFIED						
.X±0.35	X.*± 5°		APR. Alex	TITLE: WAFER PH1.25mm H4.9mm 180°SMT		
.XX±0.25	.X*± 3°	CHK. Jack	DWG NO. WF15-ONxxT49N11			
.XXX±0.15	.XX*± 1°	DRA. Jave	PROJ. 		CUSTOMER DRAWING	
			SIZE A4	SCALE NA	SHEET 2/3	REV. A



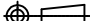
REV.	Q'TY	ECN. NO.	APR.	DATE
A		FIRST RELEASE	Jason	2018.03.29



- 1.10 SPROCKET HOLE PITCH CUMULATIVE TOLERANCE $\pm 0.2\text{mm}$.
- 2.CARRIER CAMBER NOT TO EXCEED 1mm IN 100mm.
- 3.ALL DIMENSIONS MEET EIA-481 REQUIREMENTS.
- 4.MATERIAL: CLEAR ANTISTATIC PS, COLD SEALING.
- 5.COMPONENT LOAD PER REEL: 1500 PCS.



PIN	NO.	BO	Dim W	Dim F	PCS/RELL	RELL/CARTON	PCS/CARTON
09	WF15-0N09T49N11	16.55	32	14.2	1500	8	12000
10	WF15-0N10T49N11	17.80					
11	WF15-0N11T49N11	19.05					
12	WF15-0N12T49N11	20.30					
13	WF15-0N13T49N11	21.55					
14	WF15-0N14T49N11	22.80	44	20.2		6	9000
15	WF15-0N15T49N11	24.05					
16	WF15-0N16T49N11	25.30					

DIMENSION IN mm		山谷道	深圳市山谷道电子有限公司			
TOLERANCE UNLESS OTHERWISE SPECIFIED						
.X±0.35	X:± 5°	APR. Alex	TITLE: WAFER PH1.25mm H4.9mm 180°SMT			
.XX±0.25	.X:± 3°	CHK. Jack	DWG NO. WF15-0NxxT49N11			
.XXX±0.15	.XX:± 1°	DRA. Jave	PROJ. 		CUSTOMER DRAWING	
			SIZE A4	SCALE NA	SHEET 3 / 3	REV. A