

A

B

C

D

E

F

A

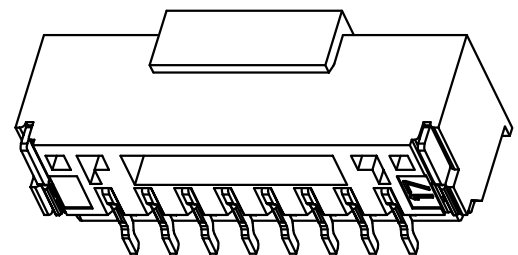
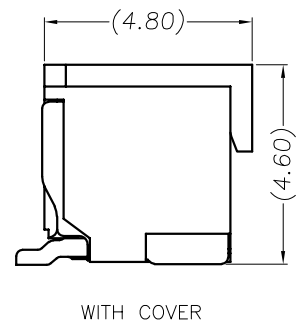
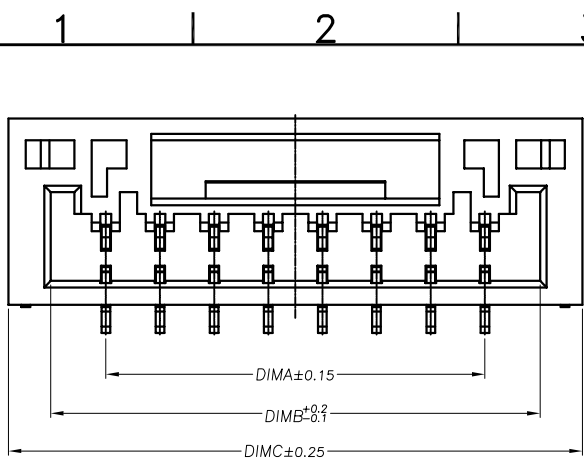
B

C

D

E

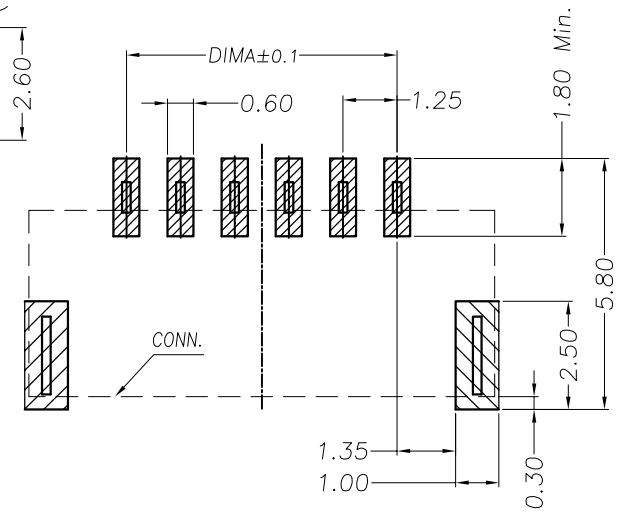
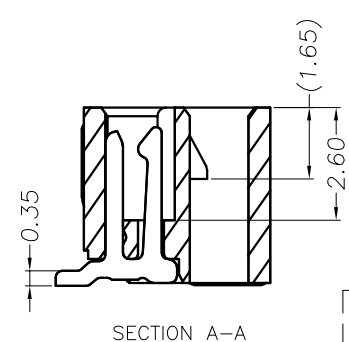
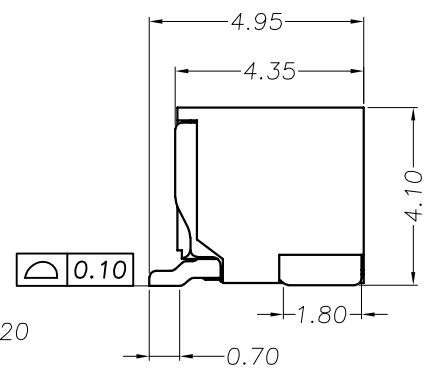
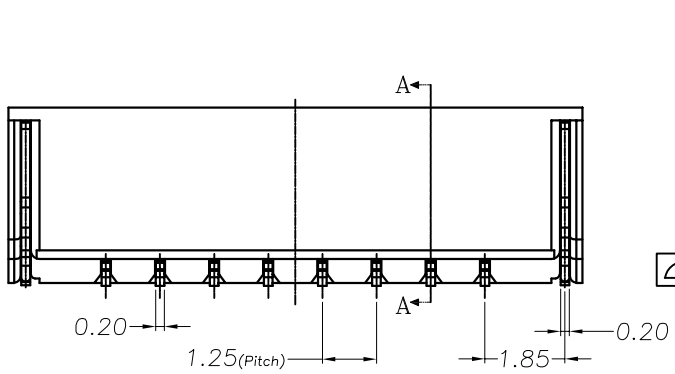
F



PRELIMINARY
DESIGN IS SUBJECT
TO CHANGE WITHOUT
PRIOR NOTICE

REV.	Q'TY	ECN. NO.	APR.	DATE
A		FIRST RELEASE	Jason	2018.03.29

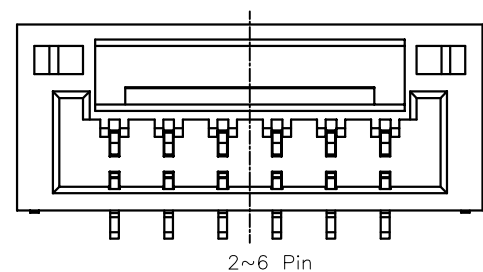
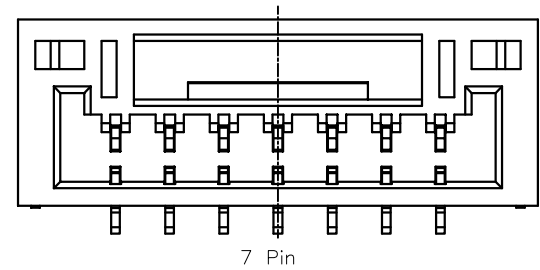
- NOTES:
1. Working temp: -25°C~85°C.
 2. Voltage rating: 50V AC/DC(rms)
 3. Contact resistance: 40mΩ max.
 4. Insulation resistance: 100MΩ min.
 5. Current rating: 1A AV/DC
 6. Withstanding Voltage: 500V AC/minute
 7. Pin Retention Force: 0.5N min.
 8. Housing material: LCP, UL94-V0, Natural
 9. Terminal materl: Brass, plating Ni 40u" min , plating Tin 100u"min.
 10. Solder tab material: Brass, plating Ni 40u" min , plating Tin 100u"min.



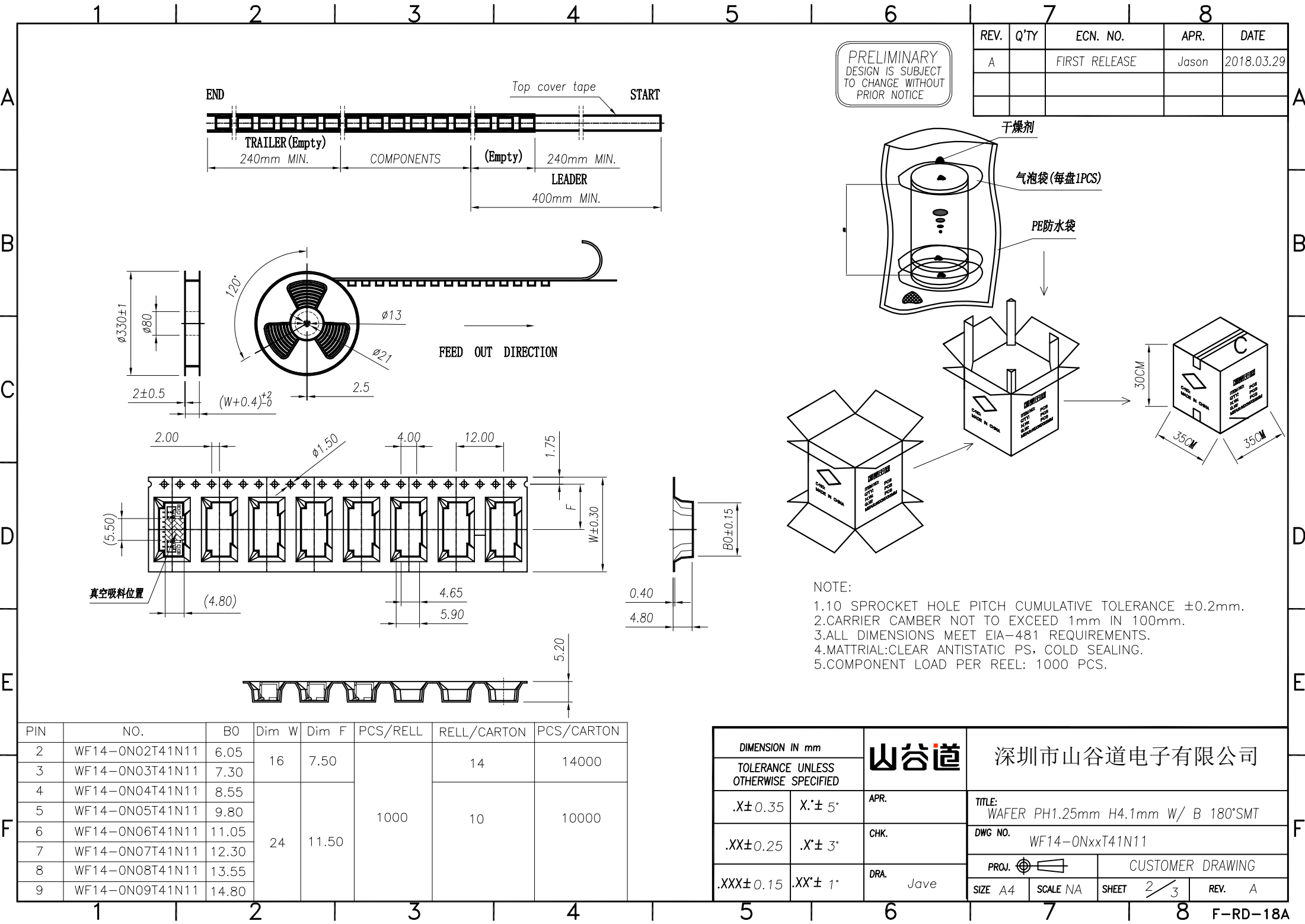
RECOMMENDED PCB LAYOUT TOP VIEW (TOLERANCE: ±0.05)

SMT SOLDER AREA

PIN	NO.	Dim A	Dim B	Dim C
2	WF14-ON02T41N11	1.25	3.80	5.75
3	WF14-ON03T41N11	2.50	5.05	7.00
4	WF14-ON04T41N11	3.75	6.30	8.25
5	WF14-ON05T41N11	5.00	7.55	9.50
6	WF14-ON06T41N11	6.25	8.80	10.75
7	WF14-ON07T41N11	7.50	10.05	12.00
8	WF14-ON08T41N11	8.75	11.30	13.25
9	WF14-ON09T41N11	10.00	12.55	14.50
10	WF14-ON10T41N11	11.25	13.80	15.75
11	WF14-ON11T41N11	12.50	15.05	17.00
12	WF14-ON12T41N11	13.75	16.30	18.25
13	WF14-ON13T41N11	15.00	17.55	19.50
14	WF14-ON14T41N11	16.25	18.80	20.75
15	WF14-ON15T41N11	17.50	20.05	22.00
16	WF14-ON20T41N11	18.75	21.30	23.25

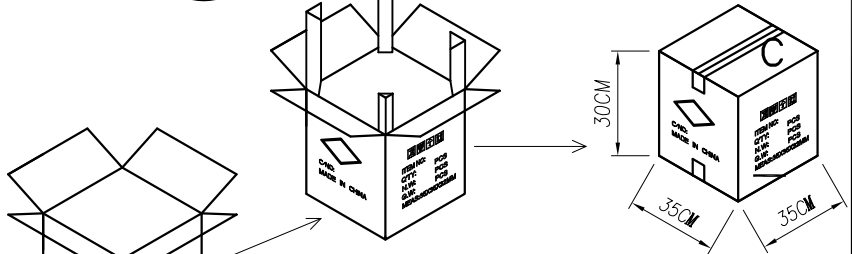
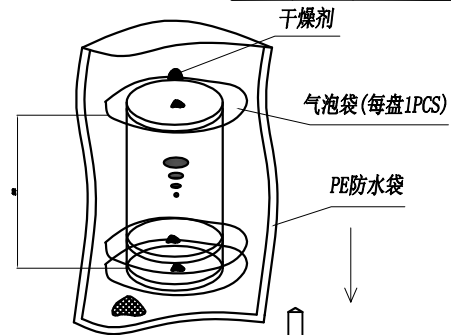


DIMENSION IN mm			深圳市山谷道电子有限公司
TOLERANCE UNLESS OTHERWISE SPECIFIED			
.X±0.35	X'±5°	APR. Alex	TITLE: WAFER PH1.25mm H4.1mm W/ B 180°SMT
.XX±0.25	.X'±3°	CHK. Jack	DWG NO. WF14-ONxxT41N11
.XXX±0.15	.XX'±1°	DRA. Jave	PROJ. CUSTOMER DRAWING
SIZE A4	SCALE 5:1	SHEET 1/3	REV. A



PRELIMINARY
DESIGN IS SUBJECT
TO CHANGE WITHOUT
PRIOR NOTICE

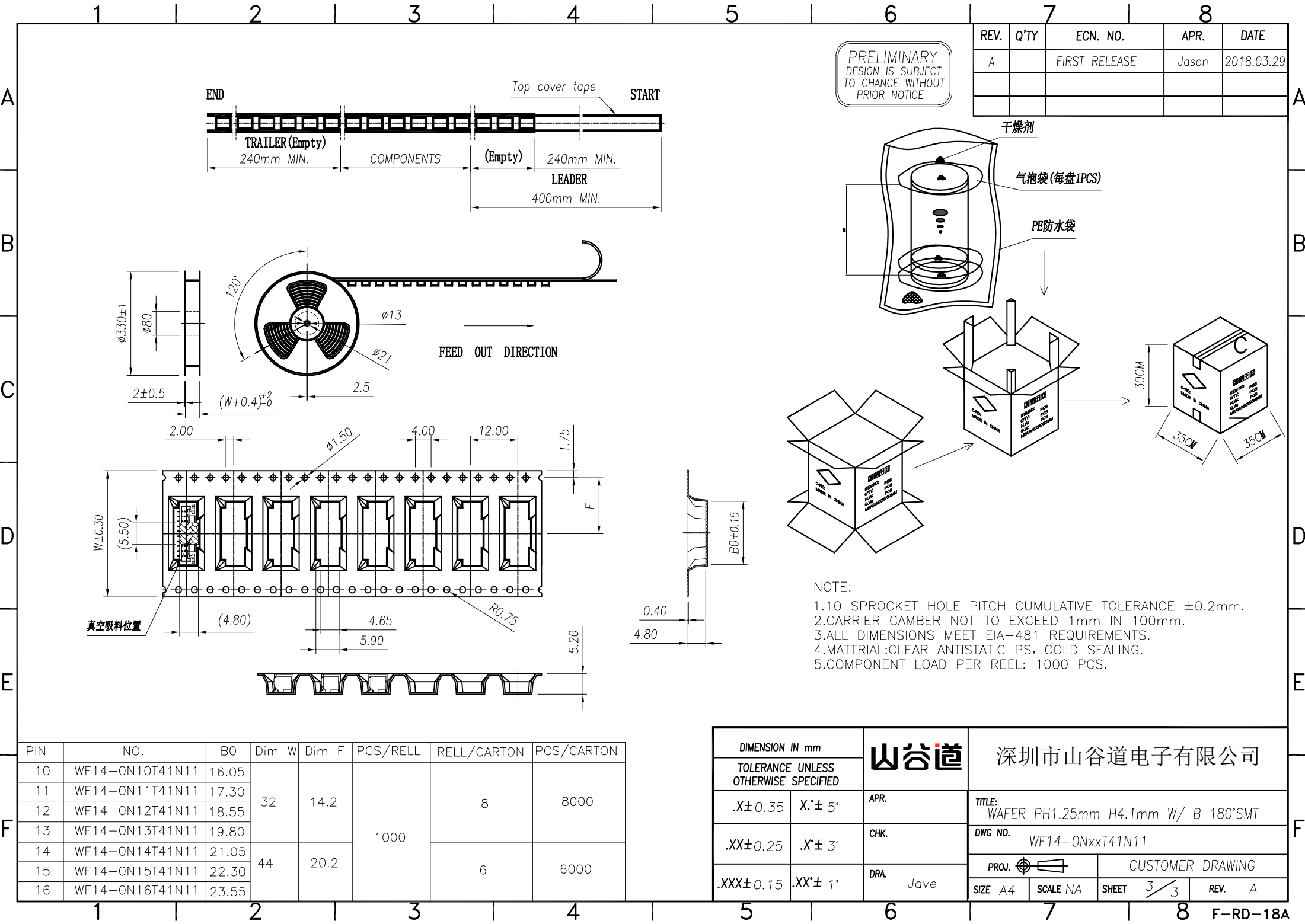
REV.	Q'TY	ECN. NO.	APR.	DATE
A		FIRST RELEASE	Jason	2018.03.29



- NOTE:
- 1.10 SPROCKET HOLE PITCH CUMULATIVE TOLERANCE $\pm 0.2\text{mm}$.
 - 2.CARRIER CAMBER NOT TO EXCEED 1mm IN 100mm.
 - 3.ALL DIMENSIONS MEET EIA-481 REQUIREMENTS.
 - 4.MATERIAL: CLEAR ANTISTATIC PS, COLD SEALING.
 - 5.COMPONENT LOAD PER REEL: 1000 PCS.

DIMENSION IN mm		TOLERANCE UNLESS OTHERWISE SPECIFIED	
.X \pm 0.35	X.* \pm 5°	APR.	
.XX \pm 0.25	.X.* \pm 3°	CHK.	
.XXX \pm 0.15	.XX.* \pm 1°	DRA.	Jave

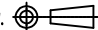
山谷道		深圳市山谷道电子有限公司	
TITLE:		DWG NO.	
WAFFER PH1.25mm H4.1mm W/ B 180°SMT		WF14-ONxxT41N11	
PROJ.		CUSTOMER DRAWING	
SIZE	A4	SCALE	NA
SHEET	2/3	REV.	A



PRELIMINARY
DESIGN IS SUBJECT
TO CHANGE WITHOUT
PRIOR NOTICE

REV.	Q'TY	ECN. NO.	APR.	DATE
A		FIRST RELEASE	Jason	2018.03.29

PIN	NO.	B0	Dim W	Dim F	PCS/RELL	RELL/CARTON	PCS/CARTON
10	WF14-ON10T41N11	16.05	32	14.2	1000	8	8000
11	WF14-ON11T41N11	17.30					
12	WF14-ON12T41N11	18.55					
13	WF14-ON13T41N11	19.80					
14	WF14-ON14T41N11	21.05	44	20.2		6	6000
15	WF14-ON15T41N11	22.30					
16	WF14-ON16T41N11	23.55					

DIMENSION IN mm		山谷道	深圳市山谷道电子有限公司			
TOLERANCE UNLESS OTHERWISE SPECIFIED						
.X±0.35	X'± 5°	APR.	TITLE: WAFER PH1.25mm H4.1mm W/ B 180°SMT			
.XX±0.25	.X'± 3°	CHK.	DWG NO. WF14-ONxxT41N11			
.XXX±0.15	.XX'± 1°	DRA. Jave	PROJ. 		CUSTOMER DRAWING	
			SIZE A4	SCALE NA	SHEET 3 / 3	REV. A