



PRELIMINARY  
DESIGN IS SUBJECT  
TO CHANGE WITHOUT  
PRIOR NOTICE

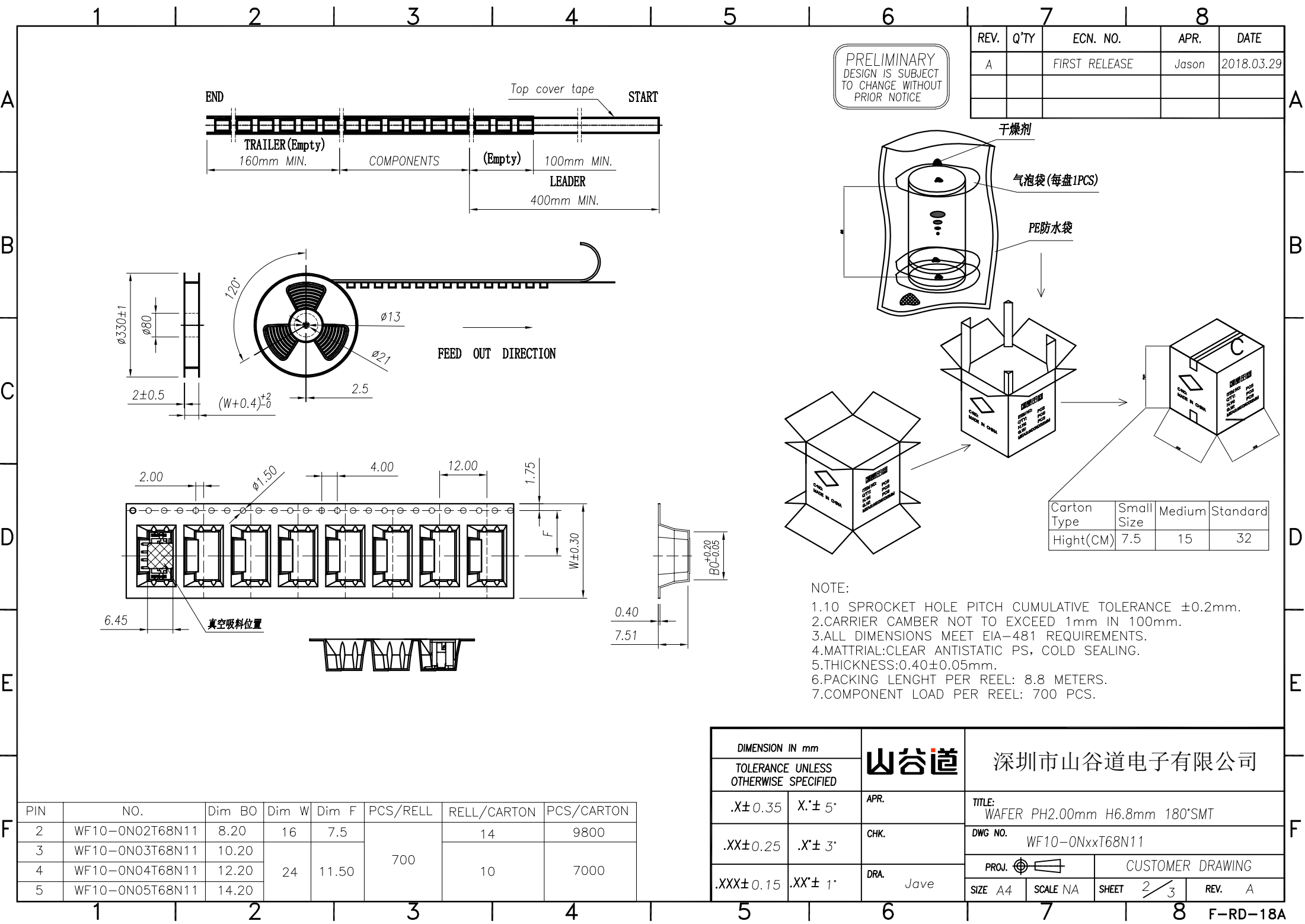
REV.	Q'TY	ECN. NO.	APR.	DATE
A		FIRST RELEASE	Jason	2018.03.29

- NOTES:
- Working temp: $-25^{\circ}C \sim 85^{\circ}C$ .
  - Voltage rating:100V AV/DC(rms)
  - Contact resistance:20mΩ max.
  - Insulation resistance:1000MΩ min.
  - Current rating:2A AV/DC
  - Withstanding Voltage:800V AC/minute
  - Pin Retention Force:15N min.
  - Housing material:LCP UL94-V0,Natural
  - Terminal materi:Brass, plating Ni 50u" min , plating Tin 100u"min.
  - Solder tab material:Brass, plating Ni 50u" min , plating Tin 100u"min.

RECOMMENDED PCB LAYOUT TOP VIEW (TOLERANCE:±0.05)

SMT SOLDER AREA

DIMENSION IN mm			深圳市山谷道电子有限公司			
TOLERANCE UNLESS OTHERWISE SPECIFIED						
.X±0.35	X:± 5°	APR. <i>Alex</i>	TITLE: WAFER PH2.00mm H6.8mm 180°SMT			
.XX±0.25	.X:± 3°	CHK. <i>Jack</i>	DWG NO. WF10-0NxxT68N11			
.XXX±0.15	.XX:± 1°	DRA. <i>Jave</i>	PROJ. 		CUSTOMER DRAWING	
			SIZE A4	SCALE 4:1	SHEET 1/3	REV. A



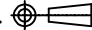
PRELIMINARY  
DESIGN IS SUBJECT  
TO CHANGE WITHOUT  
PRIOR NOTICE

REV.	Q'TY	ECN. NO.	APR.	DATE
A		FIRST RELEASE	Jason	2018.03.29

Carton Type	Small Size	Medium	Standard
Hight(CM)	7.5	15	32

- NOTE:
- 1.10 SPROCKET HOLE PITCH CUMULATIVE TOLERANCE  $\pm 0.2\text{mm}$ .
  - 2.CARRIER CAMBER NOT TO EXCEED 1mm IN 100mm.
  - 3.ALL DIMENSIONS MEET EIA-481 REQUIREMENTS.
  - 4.MATERIAL: CLEAR ANTISTATIC PS, COLD SEALING.
  - 5.THICKNESS:  $0.40 \pm 0.05\text{mm}$ .
  - 6.PACKING LENGHT PER REEL: 8.8 METERS.
  - 7.COMPONENT LOAD PER REEL: 700 PCS.

PIN	NO.	Dim BO	Dim W	Dim F	PCS/RELL	RELL/CARTON	PCS/CARTON
2	WF10—0N02T68N11	8.20	16	7.5	700	14	9800
3	WF10—0N03T68N11	10.20	24	11.50		10	7000
4	WF10—0N04T68N11	12.20					
5	WF10—0N05T68N11	14.20					

DIMENSION IN mm		山谷道	深圳市山谷道电子有限公司			
TOLERANCE UNLESS OTHERWISE SPECIFIED						
.X±0.35	X.±5°	APR.	TITLE: WAFER PH2.00mm H6.8mm 180°SMT			
.XX±0.25	.X.±3°	CHK.	DWG NO. WF10-0NxxT68N11			
.XXX±0.15	.XX.±1°	DRA. Jave	PROJ. 		CUSTOMER DRAWING	
			SIZE A4	SCALE NA	SHEET 2/3	REV. A

A

A

B

B

C

C

D

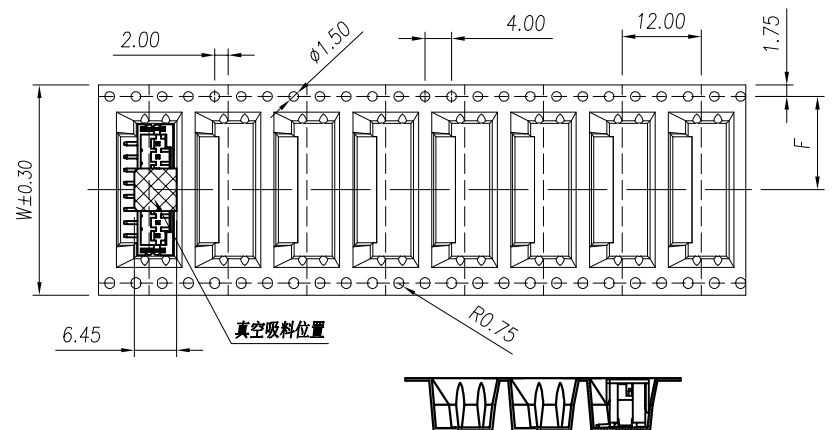
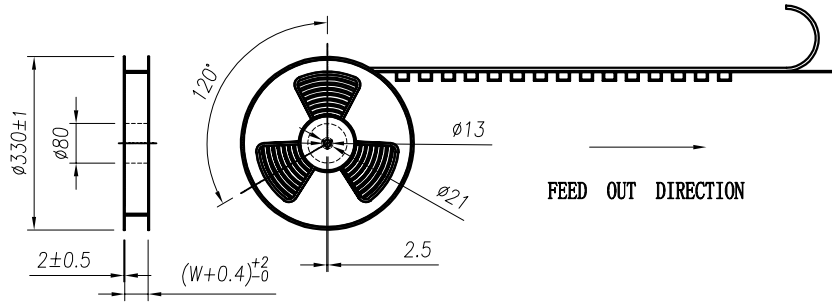
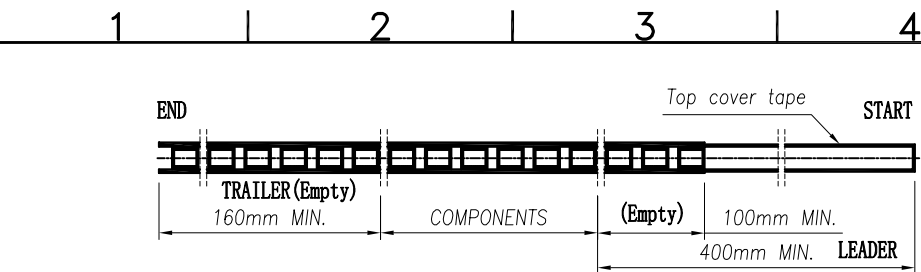
D

E

E

F

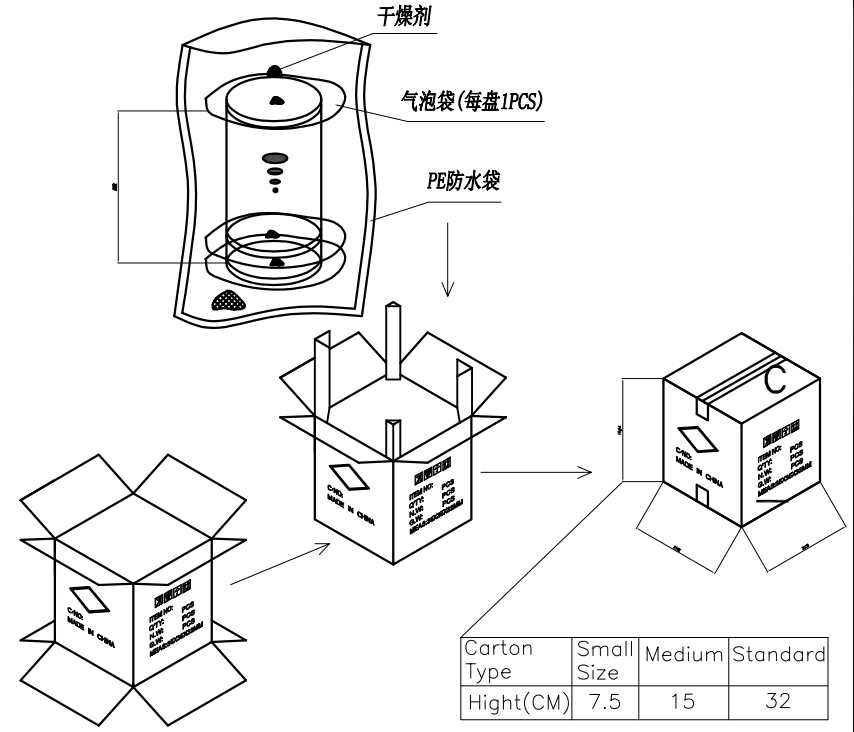
F



PIN	NO.	Dim BO	Dim W	Dim F	PCS/RELL	RELL/CARTON	PCS/CARTON
6	WF10-0N06T68N11	16.20	32	14.2	700	8	5600
7	WF10-0N07T68N11	18.20					
8	WF10-0N08T68N11	20.20					
9	WF10-0N09T68N11	22.20	44	20.2		6	4200
10	WF10-0N10T68N11	24.20					
11	WF10-0N11T68N11	26.20					
12	WF10-0N12T68N11	28.20					
13	WF10-0N13T68N11	30.20					
14	WF10-0N14T68N11	32.20	56	26.2		5	3500
15	WF10-0N15T68N11	34.20					
16	WF10-0N16T68N11	36.20					

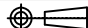
PRELIMINARY  
DESIGN IS SUBJECT  
TO CHANGE WITHOUT  
PRIOR NOTICE

REV.	Q'TY	ECN. NO.	APR.	DATE
A		FIRST RELEASE	Jason	2018.03.29



Carton Type	Small Size	Medium	Standard
Hight(CM)	7.5	15	32

- NOTE:
- 1.10 SPROCKET HOLE PITCH CUMULATIVE TOLERANCE  $\pm 0.2\text{mm}$ .
  - 2.CARRIER CAMBER NOT TO EXCEED 1mm IN 100mm.
  - 3.ALL DIMENSIONS MEET EIA-481 REQUIREMENTS.
  - 4.MATERIAL: CLEAR ANTISTATIC PS, COLD SEALING.
  - 5.THICKNESS:  $0.40 \pm 0.05\text{mm}$ .
  - 6.PACKING LENGTH PER REEL: 8.8 METERS.
  - 7.COMPONENT LOAD PER REEL: 700 PCS.

DIMENSION IN mm		山谷道	深圳市山谷道电子有限公司			
TOLERANCE UNLESS OTHERWISE SPECIFIED						
.X±0.35	X*±5°	APR.	TITLE: WAFER PH2.00mm H6.8mm 180°SMT			
.XX±0.25	.X*±3°	CHK.	DWG NO. WF10-0NxxT68N11			
.XXX±0.15	.XX*±1°	DRA. Jave	PROJ. 		CUSTOMER DRAWING	
			SIZE A4	SCALE NA	SHEET 3/3	REV. A