

PRELIMINARY  
DESIGN IS SUBJECT  
TO CHANGE WITHOUT  
PRIOR NOTICE


REV.	Q'TY	ECN. NO.	APR.	DATE
A		FIRST RELEASE	Jason	2018.03.29

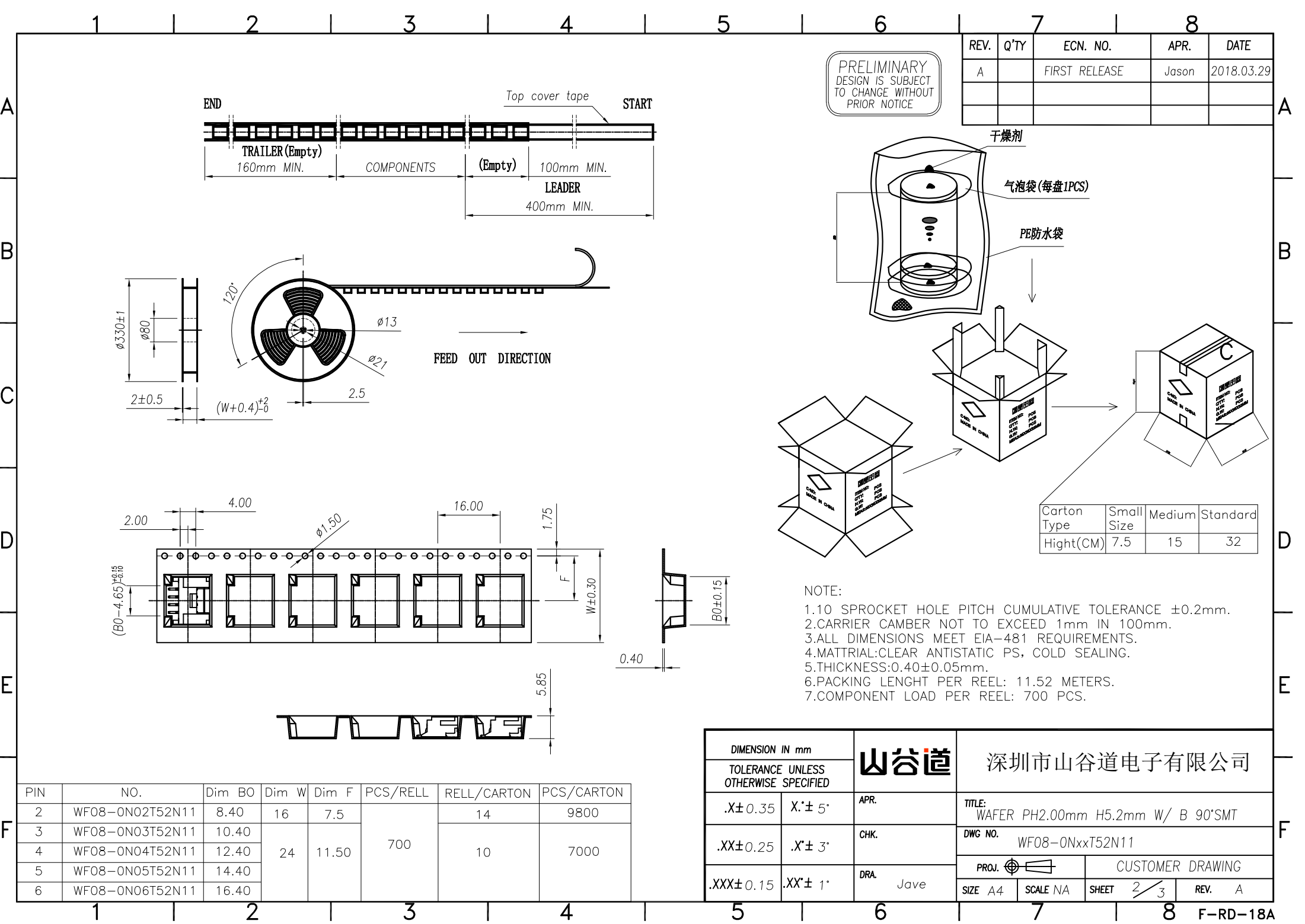
- NOTES:
- Working temp:-25°C~85°C.
  - Voltage rating:100V AV/DC(rms)
  - Contact resistance:20mΩ max.
  - Insulation resistance:1000MΩ min.
  - Current rating:2A AV/DC
  - Withstanding Voltage:800V AC/minute
  - Pin Retention Force:15N min.
  - Housing material:LCP UL94-V0,Natural
  - Terminal materi:Brass,  
plating Ni 50u" min , plating Tin 100u"min.
  - Solder tab material:Brass,  
plating Ni 50u" min , plating Tin 100u"min.

RECOMMENDED PCB LAYOUT TOP VIEW (TOLERANCE:±0.05)

SMT SOLDER AREA

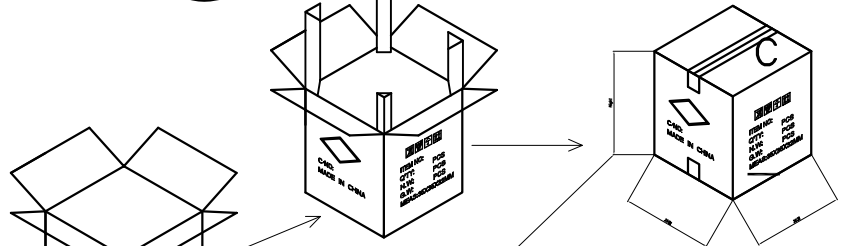
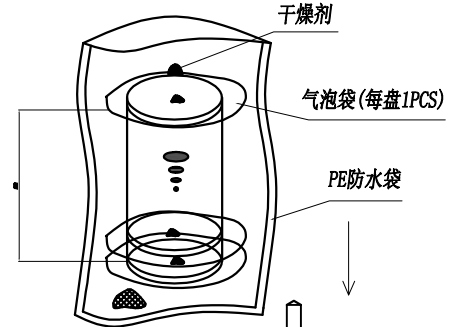
PIN	NO.	Dim A	Dim B	Dim C
2	WF08-ON02T52N11	2.00	4.90	8.00
3	WF08-ON03T52N11	4.00	6.90	10.00
4	WF08-ON04T52N11	6.00	8.90	12.00
5	WF08-ON05T52N11	8.00	10.90	14.00
6	WF08-ON06T52N11	10.00	12.90	16.00
7	WF08-ON07T52N11	12.00	14.90	18.00
8	WF08-ON08T52N11	14.00	16.90	20.00
9	WF08-ON09T52N11	16.00	18.90	22.00
10	WF08-ON10T52N11	18.00	20.90	24.00
11	WF08-ON11T52N11	20.00	22.90	26.00
12	WF08-ON12T52N11	22.00	24.90	28.00
13	WF08-ON13T52N11	24.00	26.90	30.00
14	WF08-ON14T52N11	26.00	28.90	32.00
15	WF08-ON15T52N11	28.00	30.90	34.00
16	WF08-ON16T52N11	30.00	32.90	36.00

DIMENSION IN mm		山谷道	深圳市山谷道电子有限公司			
TOLERANCE UNLESS OTHERWISE SPECIFIED						
.X±0.35	X'± 5°	APR. Alex	TITLE: WAFER PH2.00mm H5.2mm W/ B 90°SMT			
.XX±0.25	.X'± 3°	CHK. Jack	DWG NO. WF08-0NxxT52N11			
.XXX±0.15	.XX'± 1°	DRA. Jave	PROJ. 		CUSTOMER DRAWING	
			SIZE A4	SCALE 4:1	SHEET 1/3	REV. A



PRELIMINARY  
DESIGN IS SUBJECT  
TO CHANGE WITHOUT  
PRIOR NOTICE

REV.	Q'TY	ECN. NO.	APR.	DATE
A		FIRST RELEASE	Jason	2018.03.29



- NOTE:
- 1.10 SPROCKET HOLE PITCH CUMULATIVE TOLERANCE  $\pm 0.2$ mm.
  - 2.CARRIER CAMBER NOT TO EXCEED 1mm IN 100mm.
  - 3.ALL DIMENSIONS MEET EIA-481 REQUIREMENTS.
  - 4.MATERIAL: CLEAR ANTISTATIC PS, COLD SEALING.
  - 5.THICKNESS:  $0.40 \pm 0.05$ mm.
  - 6.PACKING LENGTH PER REEL: 11.52 METERS.
  - 7.COMPONENT LOAD PER REEL: 700 PCS.

山谷道 深圳市山谷道电子有限公司

